



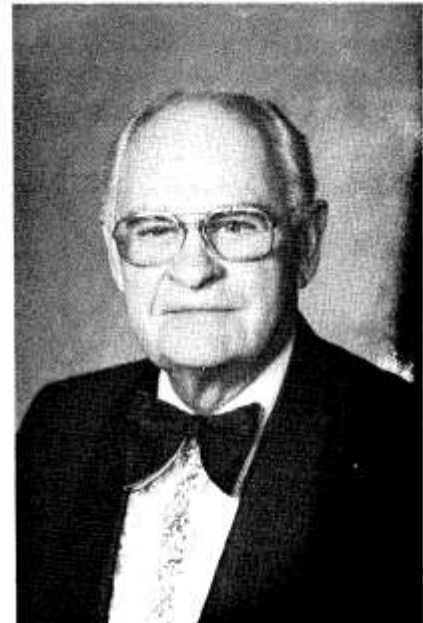
Order of the Eastern Star Wisconsin Grand Chapter

*Guiding Angel Session
87th Annual Session
of the Grand Chapter
Order of the Eastern Star of
Wisconsin*

*Civic Auditorium
Milwaukee, Wisconsin
May 16, 17 and 18th, 1978*



MRS. REBA A. FISCHER
Worthy Grand Matron



MR. GLENN BARTER
Worthy Grand Patron



GRAND OFFICERS 87th SESSION — May 16, 17, 18, 1978

Back Row: (Left to Right), Diane Hanson, Grand Esther; Irma Lindholm, Grand Martha; Jacqueline Craig, Grand Electa; Sonja Long, Grand Warder; Waldimer Moucha, Grand Sentinel; Norman Peters, Associate Grand Patron; Evelyn Menke, Associate Grand Matron; Reba Fischer, Worthy Grand Matron; Glenn Barter, Worthy Grand Patron; Carol Meeks, Grand Marshal; Betty Jane Schneider, Grand Organist; Sharon Swartwout, Grand Adah; Marliss Bendel, Grand Ruth. Front Row: Jan Whalen, Grand Chaplain; Mary Lou Zemple, Associate Grand Conductress; Audrey Pavlik, Grand Treasurer; Daisy Woods, Grand Secretary; Betty Krist, Grand Conductress; Orrel G. Thompson, P.G.M. and Grand Lecturer.

Worthy Grand Matron	Reba A. Fischer	(87)
Worthy Grand Patron	Glenn Barter	(193)
Associate Grand Matron	Evelyn C. Menke	(140)
Associate Grand Patron	Norman J. Peters	(70)
Grand Secretary	Daisy C. Woods	(219)
Grand Treasurer	Audrey J. Pavlik	(267)
Grand Conductress	Betty Krist	(205)
Associate Grand Conductress	Mary Lou Zemple	(126)
Grand Chaplain	Jan V. Whalen	(76)
Grand Lecturer	Orrel Thompson, PGM	(215)
Grand Marshal	Carol L. Meeks	(26)
Grand Organist	Betty Jane Schneider	(220)
Grand Adah	Sharon Lee Swartwout	(190)
Grand Ruth	Marliss Bendel	(22)
Grand Esther	Diane M. Hanson	(119)
Grand Martha	Irma Lindholm	(33)
Grand Electa	Jacqueline M. Craig	(40)
Grand Warder	Sonja R. Long	(63)
Grand Sentinel	Waldimer M. Moucha	(112)
Grand Trustee, Chairman	Eugene F. Schmutzler, PGP	(176)
Grand Trustee, 2 years	Robert R. Fischer, PGP	(87)
Grand Trustee, 3 years	Patricia Damon, PGM	(234)

Watchwords: **R**everence **E**nthusiasm **B**enevolence **A**wareness

Aim: To always remember it is God's wisdom and strength that guides us.

Bible Verses:

In God I put my trust, I will not be afraid. Psalm 56:11

All things are possible to Him that believeth. Mark 9:23

The theme "Angels of God" was displayed in silver script lettering on the velvet curtain above the Grand Chapter East. At the left was a huge angel doll dressed in silver material with a glittering halo above the head and a large red rose held in the hands. The base of the angel was surrounded by fluffy white clouds. A large white open Bible hung in the center of the East; the left page containing the Watchwords. The right page had the Bible Verse. A silver star within a Pentagon was in the upper right corner. Green carpeting covered the floor of the dais. The railings of the stairs were wound with white satin with huge pink bows at the bottom steps and green bows at the top steps. Foliage plants provided a refreshing atmosphere for the dais, between the stairs, and in front of the organ where there were two angels. A white satin standard holding an angel figurine was placed among the foliage plants between the stairs. The stairs matched the beautiful white fences for they were covered with white canvas with green carpet strip in the center. White drapes festooned with a garland of red roses covered the edge of the dais. The Grand Chapter Room was surrounded with the white lattice fences with the illuminated fence posts. Behind each Star Point chair was a mirrored Pentagon with an Angel spotlighted with the appropriate color and the base of the emblem was banked with fern plants. A most exquisite Pentagon containing the Effulgent Sun decorated the West. This was the artwork of Brother Robert Zastrow of Martha Washington Chapter (124).



Special Projects
Refurbish Soda Fountain

Number of Chapters 230
Members 38,918
Life Members 5,226